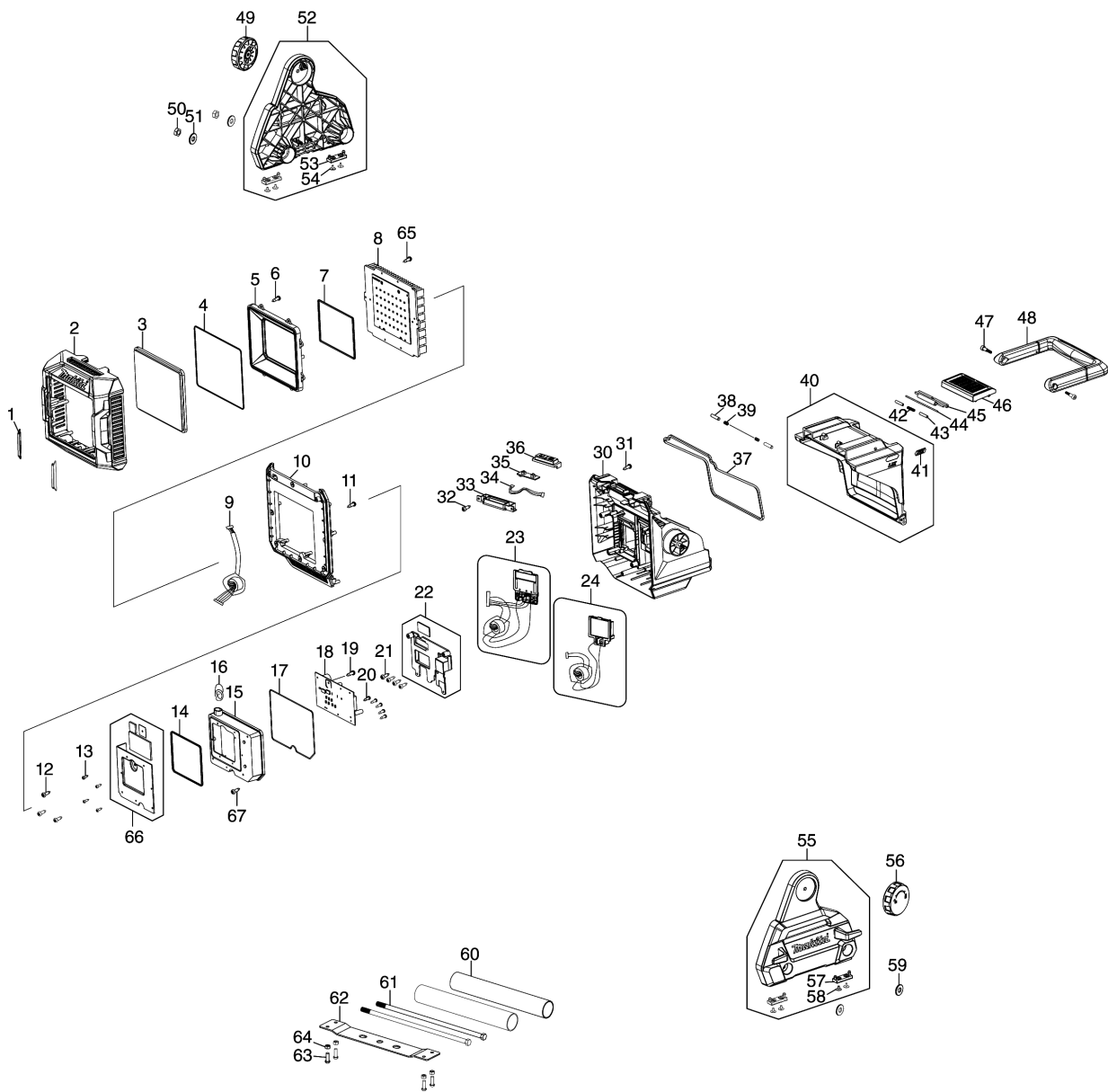


Model No.ML005G CORDLESS WORKLIGHT



Model No.ML005G CORDLESS WORKLIGHT

| Položka | Číslo dílu | Popis | Změna | Množství | New/Old | Možnost 1 | Možnost 2 | Poznámka |
|---------|------------|--------------------------------|-------|----------|---------|-----------|-----------|----------|
| 001 | GM00002396 | FRONT COVER PLATE | | 2 | | | | |
| 002 | GM00002380 | FRONT COVER ASSY | | 1 | | | | |
| 003 | GM00002381 | LENS | | 1 | | | | |
| 004 | GM00002382 | O-RING | | 1 | | | | |
| 005 | GM00002383 | REFLECTOR ASSY | | 1 | | | | |
| 006 | GM00001333 | SCREW 3 X 12PB B0130120702 | | 8 | | | | |
| 007 | GM00002384 | O-RING | | 1 | | | | |
| 008 | GM00002385 | LED ASSY | | 1 | | | | |
| 009 | GM00002397 | LEAD UNIT ASSY | | 1 | | | | |
| 010 | GM00002386 | MID-BODY COVER | | 1 | | | | |
| 011 | GM00001333 | SCREW 3 X 12PB B0130120702 | | 8 | | | | |
| 012 | GM00002165 | SCREW 3X18 PT | | 3 | | | | |
| 013 | GM00001395 | SCREW 2.6X8PB B0126081102 | | 4 | | | | |
| 014 | GM00002388 | O-RING | | 1 | | | | |
| 015 | GM00002389 | POWER CASE | | 1 | | | | |
| 016 | GM00002320 | EVA | | 1 | | | | |
| 017 | GM00002390 | O-RING | | 1 | | | | |
| 018 | GM00002415 | MAIN PCBA ASSY | | 1 | | | | |
| 019 | GM00002414 | SCREW 3X8PM | | 1 | | | | |
| 020 | GM00001395 | SCREW 2.6X8PB B0126081102 | | 5 | | | | |
| 021 | GM00002165 | SCREW 3X18 PT | | 4 | | | | |
| 022 | GM00002392 | TERMINAL HOLDING PLATE ASSY | | 1 | | | | |
| 023 | GM00002393 | XGT TERMINAL ASSY | | 1 | | | | |
| 024 | GM00002394 | LXT TERMINAL ASSY | | 1 | | | | |
| 030 | GM00002416 | MID-BODY ASSY | | 1 | | | | |
| 031 | GM00002165 | SCREW 3X18 PT | | 10 | | | | |
| 032 | GM00002165 | SCREW 3X18 PT | | 2 | | | | |
| 033 | GM00002406 | SWITCH HOLDER | | 1 | | | | |
| 034 | GM00002407 | LEAD UNIT | | 1 | | | | |
| 035 | GM00002140 | SWITCH PCBA ASSY | | 1 | | | | |
| 036 | GM00002141 | SWITCH ASSY | | 1 | | | | |
| 037 | GM00002401 | O-RING | | 1 | | | | |
| 038 | GM00002403 | SHAFT | | 2 | | | | |
| 039 | GM00002402 | SPRING | | 2 | | | | |
| 040 | GM00002404 | BATTERY COVER ASSY | | 1 | | | | |
| D10 | | INC. 41 | | | | | | |
| 041 | GM00002310 | XGT LABEL | | 1 | | | | |
| 042 | GM00002309 | SPRING | | 1 | | | | |
| 043 | GM00002255 | SHAFT A | | 2 | | | | |
| 044 | GM00002256 | SHAFT B | | 1 | | | | |
| 045 | GM00002257 | LATCH B | | 1 | | | | |
| 046 | GM00002258 | LATCH A | | 1 | | | | |
| 047 | GM00002137 | INSIDE-HEX SCREW | | 2 | | | | |

Model No.ML005G CORDLESS WORKLIGHT

| Položka | Číslo dílu | Popis | Změna | Množství | New/Old | Možnost 1 | Možnost 2 | Poznámka |
|---------|------------|-------------------------------|-------|----------|---------|-----------|-----------|----------|
| 048 | GM00002405 | HANDLE ASSY | | 1 | | | | |
| 049 | GM00002160 | LATCH KNOB ASSY | | 1 | | | | |
| 050 | GM00002158 | NUT M8 | | 2 | | | | |
| 051 | GM00002157 | METAL OD20XID8.5X2MM | | 2 | | | | |
| 052 | GM00002413 | STAND-LEFT ASSY | | 1 | | | | |
| D10 | | INC. 53,54 | | | | | | |
| 053 | GM00002154 | RUBBER FOOT | | 2 | | | | |
| 054 | GM00002164 | SCREW 3X6 PWB | | 4 | | | | |
| 055 | GM00002417 | STAND-RIGHT ASSY | | 1 | | | | |
| D10 | | INC. 57,58 | | | | | | |
| 056 | GM00002160 | LATCH KNOB ASSY | | 1 | | | | |
| 057 | GM00002154 | RUBBER FOOT | | 2 | | | | |
| 058 | GM00002164 | SCREW 3X6 PWB | | 4 | | | | |
| 059 | GM00002157 | METAL OD20XID8.5X2MM | | 2 | | | | |
| 060 | GM00002411 | TUBE | | 2 | | | | |
| 061 | GM00002410 | HEX. BOLT M8 | | 2 | | | | |
| 062 | GM00002409 | BASE PLATE | | 1 | | | | |
| 063 | GM00002408 | SCREW 5X30PM | | 4 | | | | |
| 064 | GM00002155 | NUT M5 | | 4 | | | | |
| 065 | GM00001333 | SCREW 3 X 12PB B0130120702 | | 12 | | | | |
| 066 | GM00002387 | HEAT SINK ASSY | | 1 | | | | |
| 067 | GM00002165 | SCREW 3X18 PT | | 1 | | | | |
| A01B | GM00002358 | LAMP SHADE | | 1 | | | | |
| A02A | GM00002359 | ANTI-GLARE FILM | | 1 | | | | |

Please order the parts with part number.

Print Date 9/9/2022